

O6 | FIRST FLOOR

4 BEDROOMS / 5.5 BATHS /

MEDIA ROOM / STAFF QUARTERS

FIRST FLOOR	SQ. FT.	SQ. M.
INTERIOR	2,048	190
EXTERIOR	834	78
TOTAL FIRST FLOOR	2,882	268

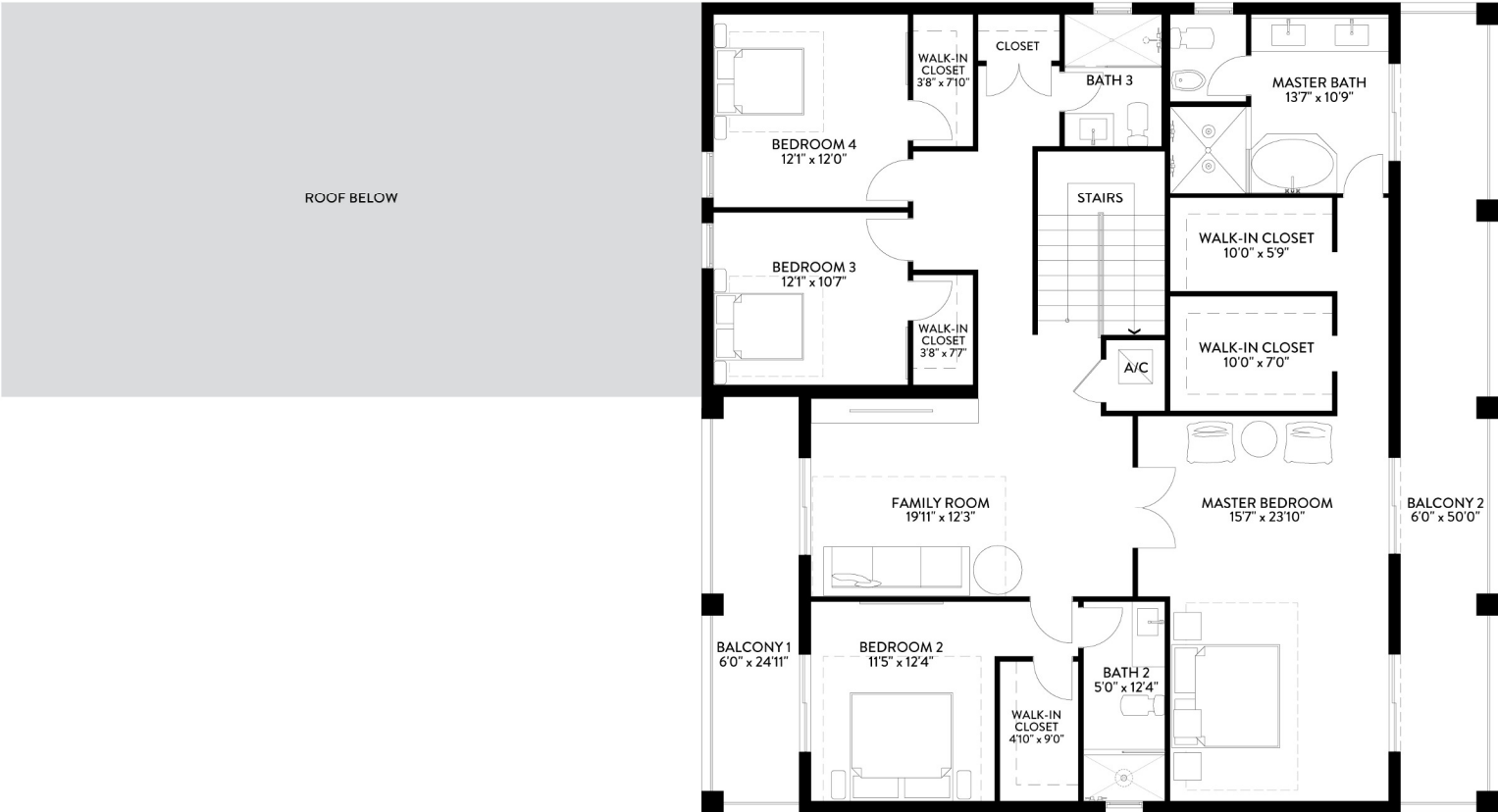
SECOND FLOOR	SQ. FT.	SQ. M.
INTERIOR	2,004	186
EXTERIOR	454	42
TOTAL SECOND FLOOR	2,458	228

TOTAL	SQ. FT.	SQ. M.
INTERIOR	4,052	376
EXTERIOR	1,288	120
TOTAL	5,340	496



Stated dimensions are taken from the measurement of the floor area of the first and second level of the interior of the residence, including the interior stairs, to the exterior boundaries of the exterior walls of the residence, and exclude all areas not under A/C, including, without limitation, the garage, entry, covered terraces and/or balconies. Note that measurements as set forth on this floor plan are generally taken at the greatest points of each given area (as if the area were a perfect rectangle). Accordingly,

the area of the actual space will typically be smaller than the product obtained by multiplying the stated length times width. All dimensions are approximate and may vary with actual construction, and all floor plans and development plans are subject to change



O6 | SECOND FLOOR


4 BEDROOMS / 5.5 BATHS /

MEDIA ROOM / STAFF QUARTERS

FIRST FLOOR	SQ. FT.	SQ. M.
INTERIOR	2,048	190
EXTERIOR	834	78
TOTAL FIRST FLOOR	2,882	268

SECOND FLOOR	SQ. FT.	SQ. M.
INTERIOR	2,004	186
EXTERIOR	454	42
TOTAL SECOND FLOOR	2,458	228

TOTAL	SQ. FT.	SQ. M.
INTERIOR	4,052	376
EXTERIOR	1,288	120
TOTAL	5,340	496

 Stated dimensions are taken from the measurement of the floor area of the first and second level of the interior of the residence, including the interior stairs, to the exterior boundaries of the exterior walls of the residence, and exclude all areas not under A/C, including, without limitation, the garage, entry, covered terraces and/or balconies. Note that measurements as set forth on this floor plan are generally taken at the greatest points of each given area (as if the area were a perfect rectangle). Accordingly,

the area of the actual space will typically be smaller than the product obtained by multiplying the stated length times width. All dimensions are approximate and may vary with actual construction, and all floor plans and development plans are subject to change



O3A | FIRST FLOOR
5 BEDROOMS / 6.5 BATHS /
MEDIA ROOM / STAFF QUARTERS

FIRST FLOOR	SQ. FT.	SQ. M.
INTERIOR	2,724	253
EXTERIOR	1,602	149
TOTAL FIRST FLOOR	4,326	402

SECOND FLOOR	SQ. FT.	SQ. M.
INTERIOR	2,569	239
EXTERIOR	657	61
TOTAL SECOND FLOOR	3,226	300

TOTAL	SQ. FT.	SQ. M.
TOTAL INTERIOR	5,293	492
TOTAL EXTERIOR	2,259	210
TOTAL	7,552	702

Stated dimensions are taken from the measurement of the floor area of the first and second level of the interior of the residence, including the interior stairs, to the exterior boundaries of the exterior walls of the residence, and exclude all areas not under A/C, including, without limitation, the garage, entry, covered terraces and/or balconies. Note that measurements as set forth on this floor plan are generally taken at the greatest points of each given area (as if the area were a perfect rectangle). Accordingly,

the area of the actual space will typically be smaller than the product obtained by multiplying the stated length times width. All dimensions are approximate and may vary with actual construction, and all floor plans and development plans are subject to change



O3A | SECOND FLOOR
5 BEDROOMS / 6.5 BATHS /
MEDIA ROOM / STAFF QUARTERS

FIRST FLOOR	SQ. FT.	SQ. M.
INTERIOR	2,724	253
EXTERIOR	1,602	149
TOTAL FIRST FLOOR	4,326	402

SECOND FLOOR	SQ. FT.	SQ. M.
INTERIOR	2,569	239
EXTERIOR	657	61
TOTAL SECOND FLOOR	3,226	300

TOTAL	SQ. FT.	SQ. M.
TOTAL INTERIOR	5,293	492
TOTAL EXTERIOR	2,259	210
TOTAL	7,552	702

Stated dimensions are taken from the measurement of the floor area of the first and second level of the interior of the residence, including the interior stairs, to the exterior boundaries of the exterior walls of the residence, and exclude all areas not under A/C, including, without limitation, the garage, entry, covered terraces and/or balconies. Note that measurements as set forth on this floor plan are generally taken at the greatest points of each given area (as if the area were a perfect rectangle). Accordingly,

the area of the actual space will typically be smaller than the product obtained by multiplying the stated length times width. All dimensions are approximate and may vary with actual construction, and all floor plans and development plans are subject to change

O4 | FIRST FLOOR
5 BEDROOMS / 9.5 BATHS / LOFT /
MEDIA ROOM / STAFF QUARTERS

FIRST FLOOR	SQ. FT.	SQ. M.
INTERIOR	3,016	280
EXTERIOR	1,367	127
TOTAL FIRST FLOOR	4,383	407

SECOND FLOOR	SQ. FT.	SQ. M.
INTERIOR	3,171	295
EXTERIOR	1,003	93
TOTAL SECOND FLOOR	4,174	388

TOTAL	SQ. FT.	SQ. M.
TOTAL INTERIOR	6,187	575
TOTAL EXTERIOR	2,370	220
TOTAL	8,557	795



Stated dimensions are taken from the measurement of the floor area of the first and second level of the interior of the residence, including the interior stairs, to the exterior boundaries of the exterior walls of the residence, and exclude all areas not under A/C, including, without limitation, the garage, entry, covered terraces and/or balconies. Note that measurements as set forth on this floor plan are generally taken at the greatest points of each given area (as if the area were a perfect rectangle). Accordingly,

the area of the actual space will typically be smaller than the product obtained by multiplying the stated length times width. All dimensions are approximate and may vary with actual construction, and all floor plans and development plans are subject to change



O4 | SECOND FLOOR
5 BEDROOMS / 9.5 BATHS / LOFT /
MEDIA ROOM / STAFF QUARTERS

FIRST FLOOR	SQ. FT.	SQ. M.
INTERIOR	3,016	280
EXTERIOR	1,367	127
TOTAL FIRST FLOOR	4,383	407

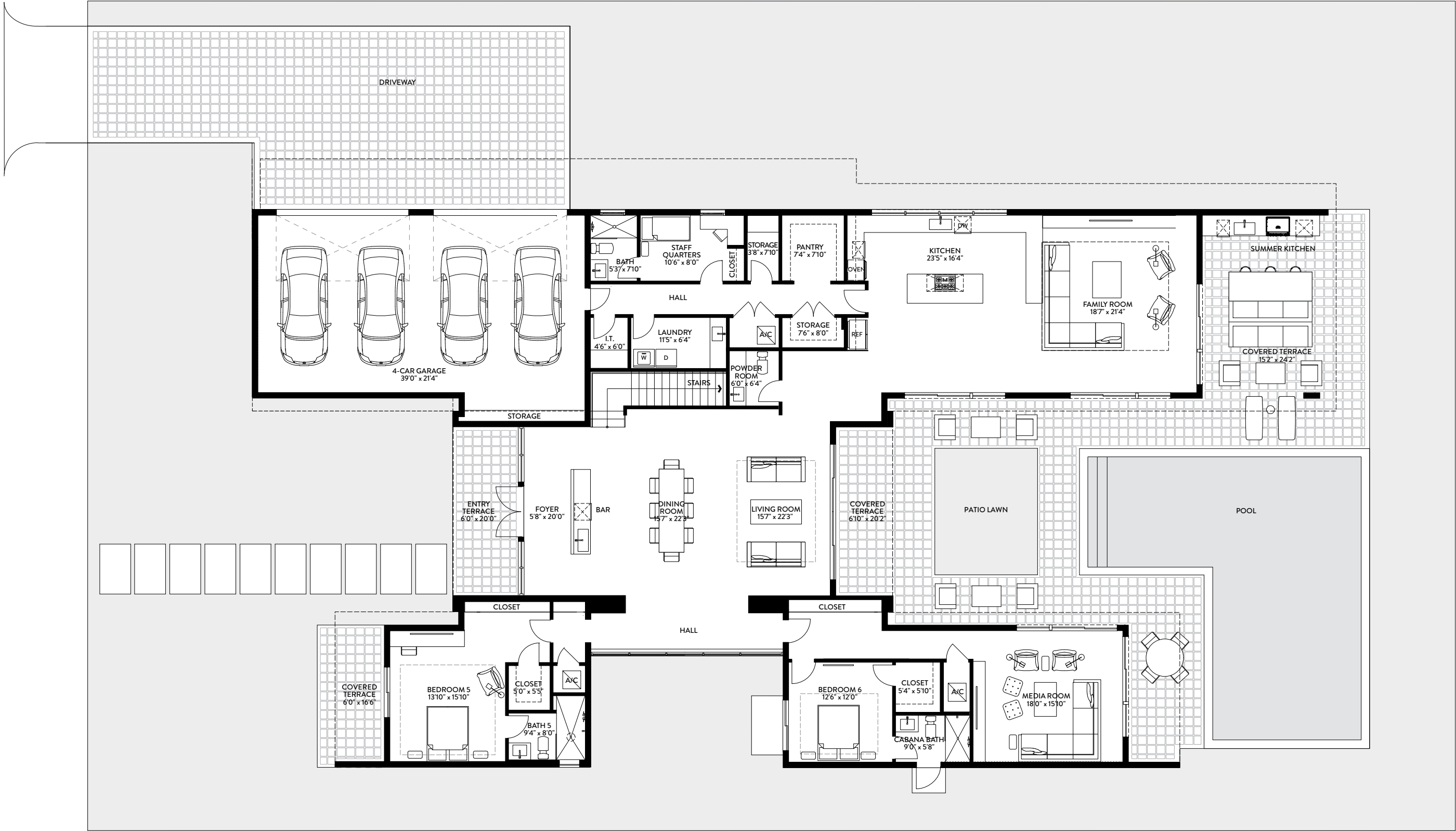
SECOND FLOOR	SQ. FT.	SQ. M.
INTERIOR	3,171	295
EXTERIOR	1,003	93
TOTAL SECOND FLOOR	4,174	388

FIRST FLOOR 6200 SF
MODEL

TOTAL	SQ. FT.	SQ. M.
TOTAL INTERIOR	6,187	575
TOTAL EXTERIOR	2,370	220
TOTAL	8,557	795

Stated dimensions are taken from the measurement of the floor area of the first and second level of the interior of the residence, including the interior stairs, to the exterior boundaries of the exterior walls of the residence, and exclude all areas not under A/C, including, without limitation, the garage, entry, covered terraces and/or balconies. Note that measurements as set forth on this floor plan are generally taken at the greatest points of each given area (as if the area were a perfect rectangle). Accordingly,

the area of the actual space will typically be smaller than the product obtained by multiplying the stated length times width. All dimensions are approximate and may vary with actual construction, and all floor plans and development plans are subject to change




O5A | FIRST FLOOR
6 BEDROOMS / 8.5 BATHS /
MEDIA ROOM / STAFF QUARTERS

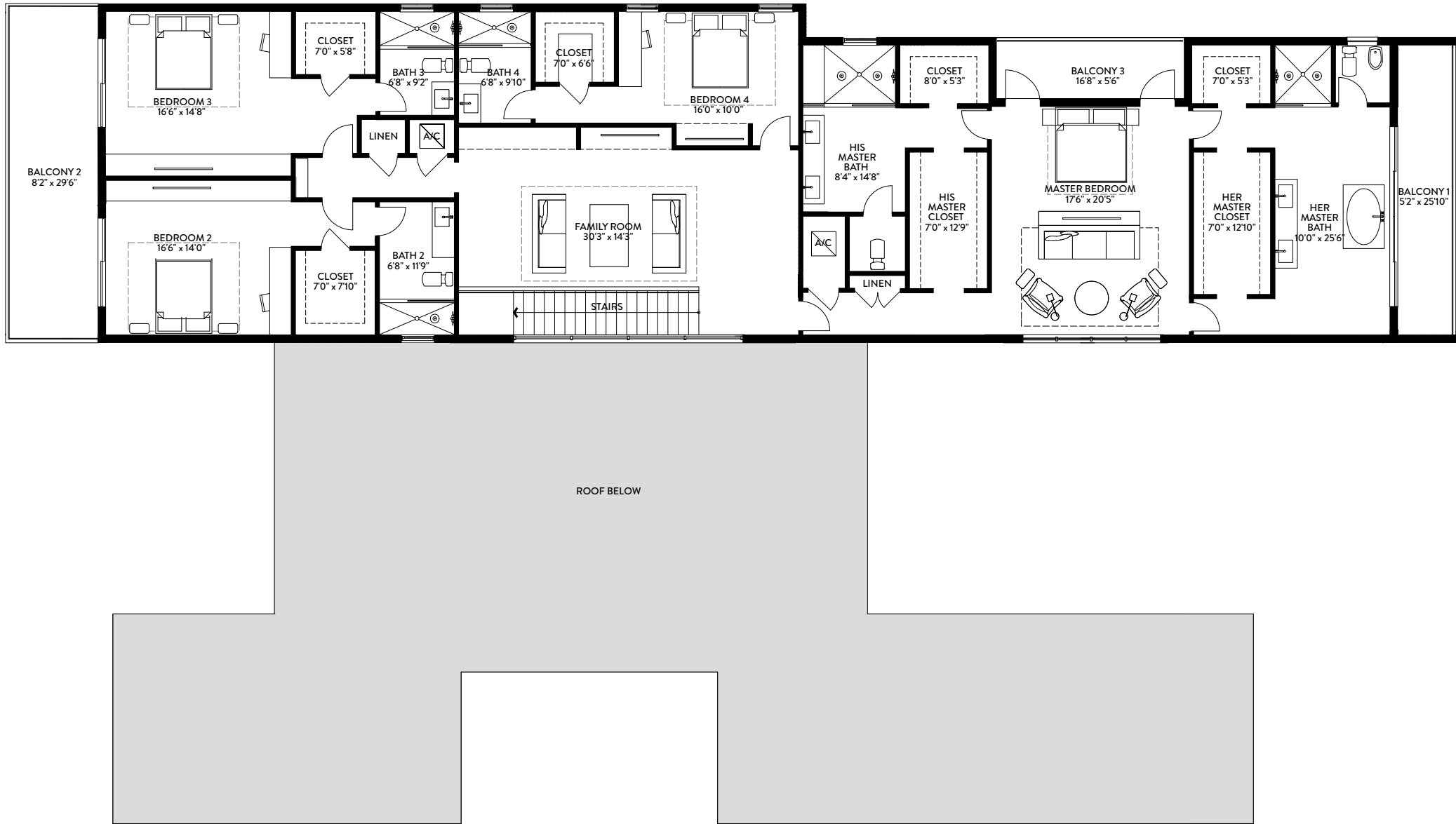
FIRST FLOOR	SQ. FT.	SQ. M.
INTERIOR	3,970	369
EXTERIOR	1,870	174
TOTAL FIRST FLOOR	5,840	543

SECOND FLOOR	SQ. FT.	SQ. M.
INTERIOR	3,168	294
EXTERIOR	494	46
TOTAL SECOND FLOOR	3,662	340

TOTAL	SQ. FT.	SQ. M.
TOTAL INTERIOR	7,138	663
TOTAL EXTERIOR	2,364	220
TOTAL	9,502	883

 Stated dimensions are taken from the measurement of the floor area of the first and second level of the interior of the residence, including the interior stairs, to the exterior boundaries of the exterior walls of the residence, and exclude all areas not under A/C, including, without limitation, the garage, entry, covered terraces and/or balconies. Note that measurements as set forth on this floor plan are generally taken at the greatest points of each given area (as if the area were a perfect rectangle). Accordingly,

the area of the actual space will typically be smaller than the product obtained by multiplying the stated length times width. All dimensions are approximate and may vary with actual construction, and all floor plans and development plans are subject to change



O5A | SECOND FLOOR
6 BEDROOMS / 8.5 BATHS /
MEDIA ROOM / STAFF QUARTERS

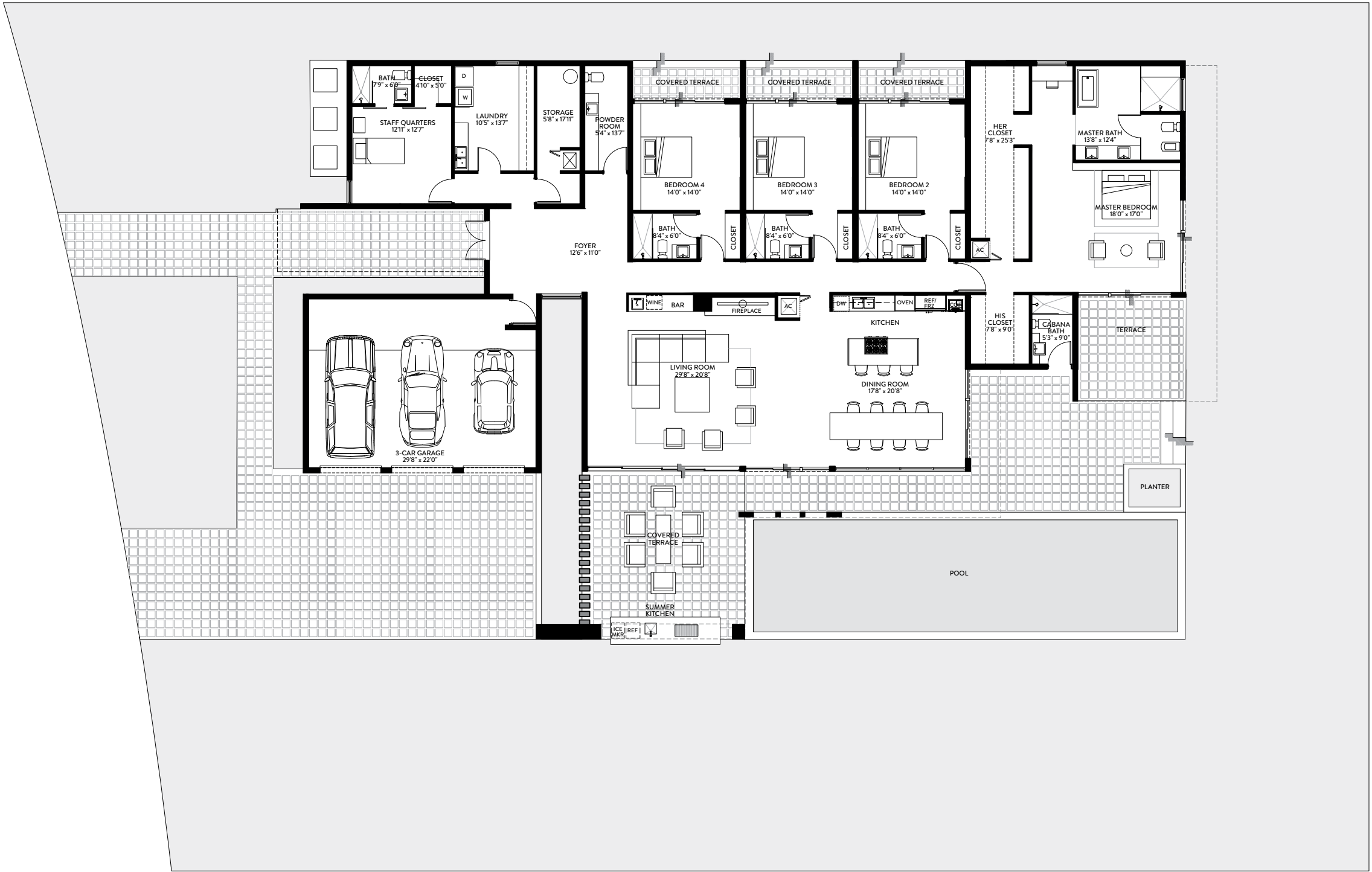
FIRST FLOOR	SQ. FT.	SQ. M.
INTERIOR	3,970	369
EXTERIOR	1,870	174
TOTAL FIRST FLOOR	5,840	543

SECOND FLOOR	SQ. FT.	SQ. M.
INTERIOR	3,168	294
EXTERIOR	494	46
TOTAL SECOND FLOOR	3,662	340

TOTAL	SQ. FT.	SQ. M.
TOTAL INTERIOR	7,138	663
TOTAL EXTERIOR	2,364	220
TOTAL	9,502	883


Stated dimensions are taken from the measurement of the floor area of the first and second level of the interior of the residence, including the interior stairs, to the exterior boundaries of the exterior walls of the residence, and exclude all areas not under A/C, including, without limitation, the garage, entry, covered terraces and/or balconies. Note that measurements as set forth on this floor plan are generally taken at the greatest points of each given area (as if the area were a perfect rectangle). Accordingly,

the area of the actual space will typically be smaller than the product obtained by multiplying the stated length times width. All dimensions are approximate and may vary with actual construction, and all floor plans and development plans are subject to change



M1
4 BEDROOMS / 6.5 BATHS /
STAFF QUARTERS


TOTAL	SQ. FT.	SQ. M.
TOTAL INTERIOR	4,231	393
TOTAL EXTERIOR	3,477	323
TOTAL	7,708	716

 Stated dimensions are taken from the measurement of the floor area of the first and second level of the interior of the residence, including the interior stairs, to the exterior boundaries of the exterior walls of the residence, and exclude all areas not under A/C, including, without limitation, the garage, entry, covered terraces and/or balconies. Note that measurements as set forth on this floor plan are generally taken at the greatest points of each given area (as if the area were a perfect rectangle). Accordingly,

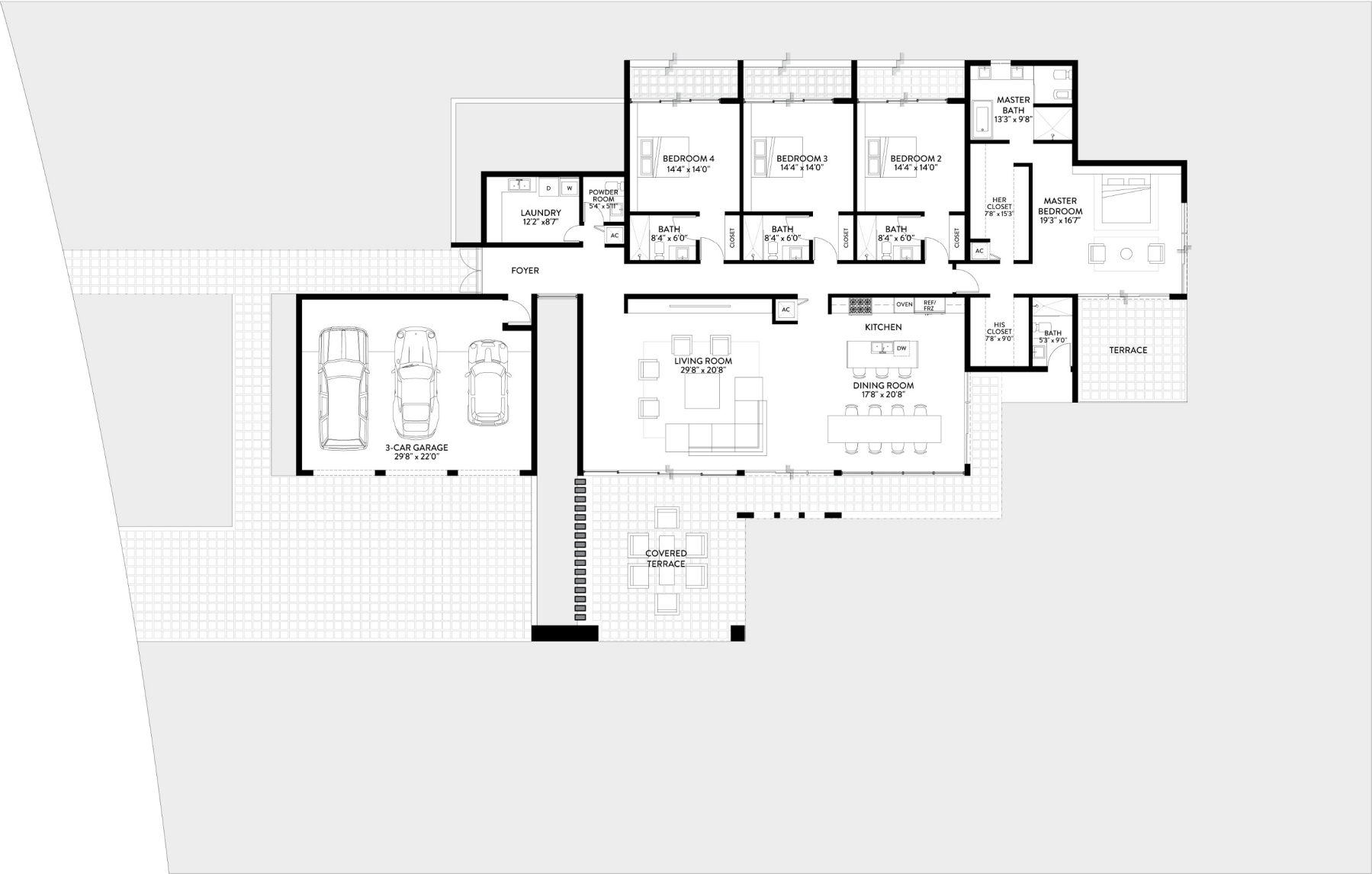
the area of the actual space will typically be smaller than the product obtained by multiplying the stated length times width. All dimensions are approximate and may vary with actual construction, and all floor plans and development plans are subject to change

M2
4 BEDROOMS / 6 BATHS /
STAFF QUARTERS

TOTAL	SQ. FT.	SQ. M.
TOTAL INTERIOR	5,011	466
TOTAL EXTERIOR	3,182	296
TOTAL	8,193	761

 Stated dimensions are taken from the measurement of the floor area of the first and second level of the interior of the residence, including the interior stairs, to the exterior boundaries of the exterior walls of the residence, and exclude all areas not under A/C, including, without limitation, the garage, entry, covered terraces and/or balconies. Note that measurements as set forth on this floor plan are generally taken at the greatest points of each given area (as if the area were a perfect rectangle). Accordingly,

the area of the actual space will typically be smaller than the product obtained by multiplying the stated length times width. All dimensions are approximate and may vary with actual construction, and all floor plans and development plans are subject to change

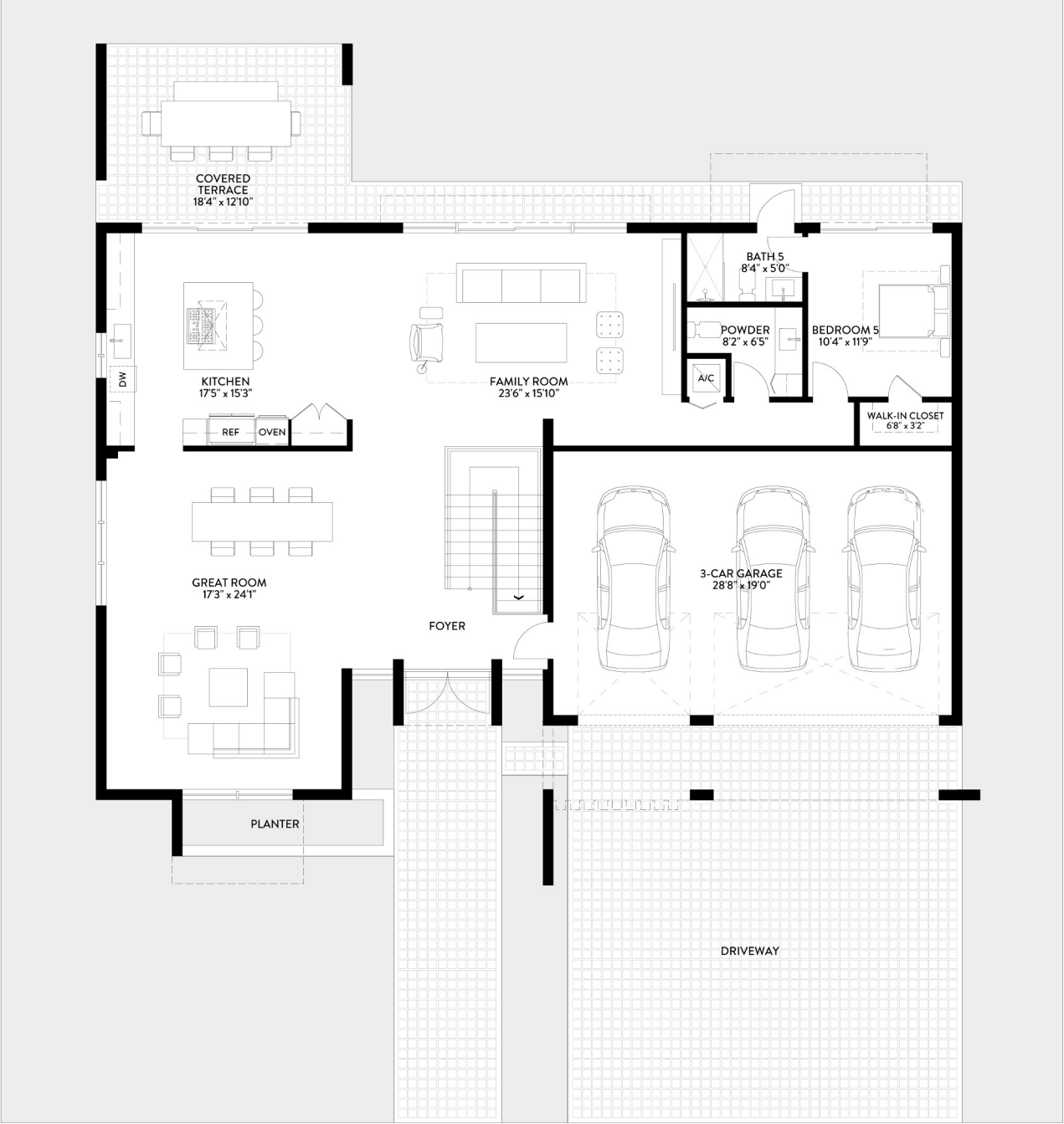


M6
4 BEDROOMS / 5.5 BATHS

TOTAL	SQ. FT.	SQ. M.
TOTAL INTERIOR	3,434	319
TOTAL EXTERIOR	1,439	134
TOTAL	4,873	453

Stated dimensions are taken from the measurement of the floor area of the first and second level of the interior of the residence, including the interior stairs, to the exterior boundaries of the exterior walls of the residence, and exclude all areas not under A/C, including, without limitation, the garage, entry, covered terraces and/or balconies. Note that measurements as set forth on this floor plan are generally taken at the greatest points of each given area (as if the area were a perfect rectangle). Accordingly,

the area of the actual space will typically be smaller than the product obtained by multiplying the stated length times width. All dimensions are approximate and may vary with actual construction, and all floor plans and development plans are subject to change



M7 FIRST FLOOR
5 BEDROOMS / 5.5 BATHS

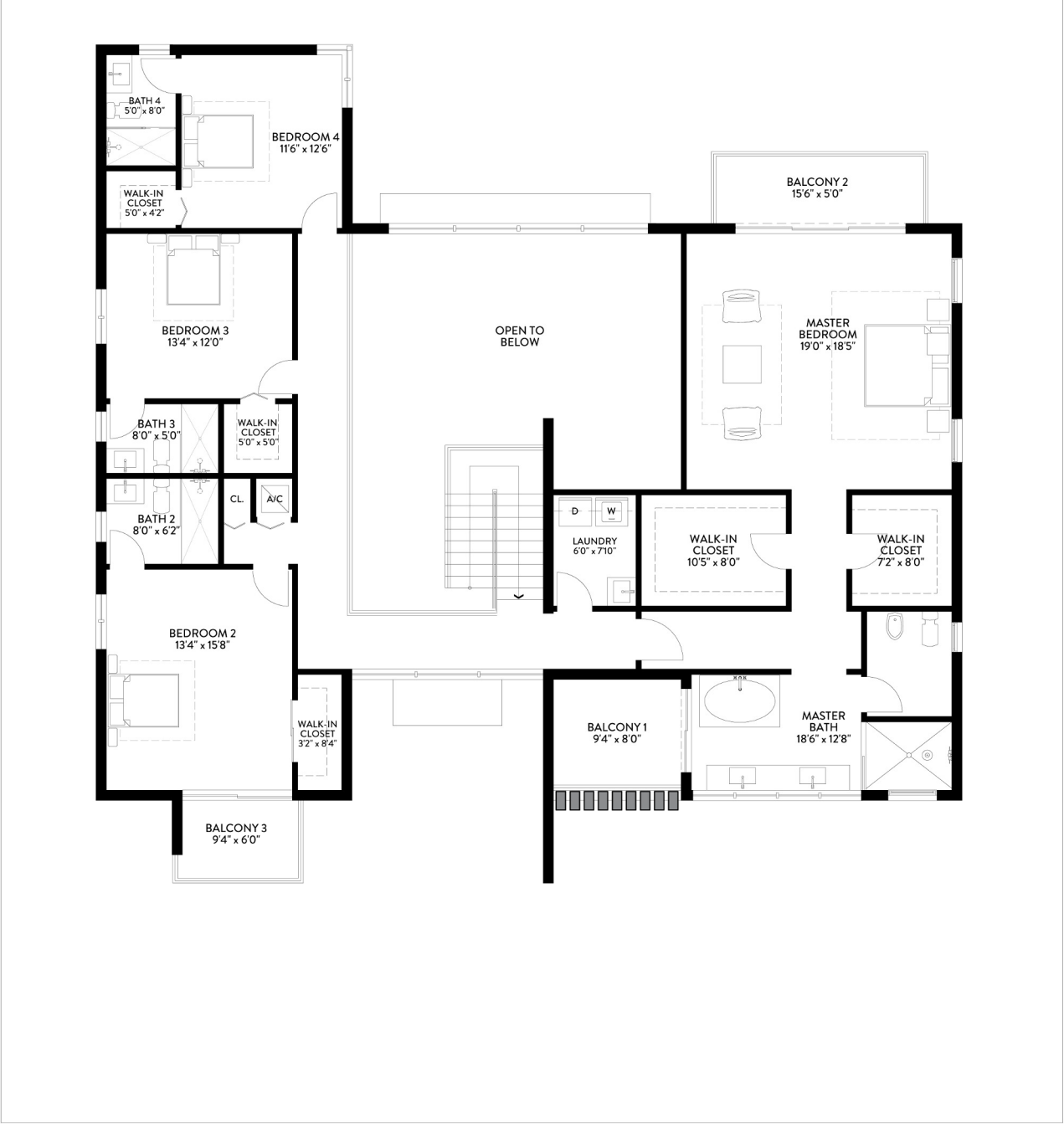
FIRST FLOOR	SQ. FT.	SQ. M.
INTERIOR	1,705	158
EXTERIOR	578	54
TOTAL FIRST FLOOR	2,283	212

SECOND FLOOR	SQ. FT.	SQ. M.
INTERIOR	2,105	196
EXTERIOR	215	20
TOTAL SECOND FLOOR	2,320	216

TOTAL	SQ. FT.	SQ. M.
INTERIOR	3,810	354
EXTERIOR	793	74
TOTAL	4,603	428

Stated dimensions are taken from the measurement of the floor area of the first and second level of the interior of the residence, including the interior stairs, to the exterior boundaries of the exterior walls of the residence, and exclude all areas not under A/C, including, without limitation, the garage, entry, covered terraces and/or balconies. Note that measurements as set forth on this floor plan are generally taken at the greatest points of each given area (as if the area were a perfect rectangle). Accordingly,

the area of the actual space will typically be smaller than the product obtained by multiplying the stated length times width. All dimensions are approximate and may vary with actual construction, and all floor plans and development plans are subject to change



M7 | SECOND FLOOR
5 BEDROOMS / 5.5 BATHS

FIRST FLOOR	SQ. FT.	SQ. M.
INTERIOR	1,705	158
EXTERIOR	578	54
TOTAL FIRST FLOOR	2,283	212

SECOND FLOOR	SQ. FT.	SQ. M.
INTERIOR	2,105	196
EXTERIOR	215	20
TOTAL SECOND FLOOR	2,320	216

TOTAL	SQ. FT.	SQ. M.
INTERIOR	3,810	354
EXTERIOR	793	74
TOTAL	4,603	428



Stated dimensions are taken from the measurement of the floor area of the first and second level of the interior of the residence, including the interior stairs, to the exterior boundaries of the exterior walls of the residence, and exclude all areas not under A/C, including, without limitation, the garage, entry, covered terraces and/or balconies. Note that measurements as set forth on this floor plan are generally taken at the greatest points of each given area (as if the area were a perfect rectangle). Accordingly,

the area of the actual space will typically be smaller than the product obtained by multiplying the stated length times width. All dimensions are approximate and may vary with actual construction, and all floor plans and development plans are subject to change