

# Una

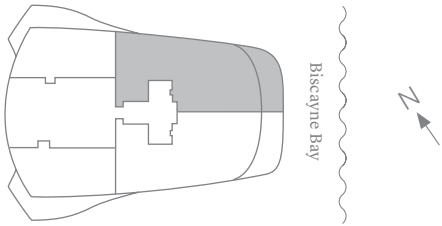
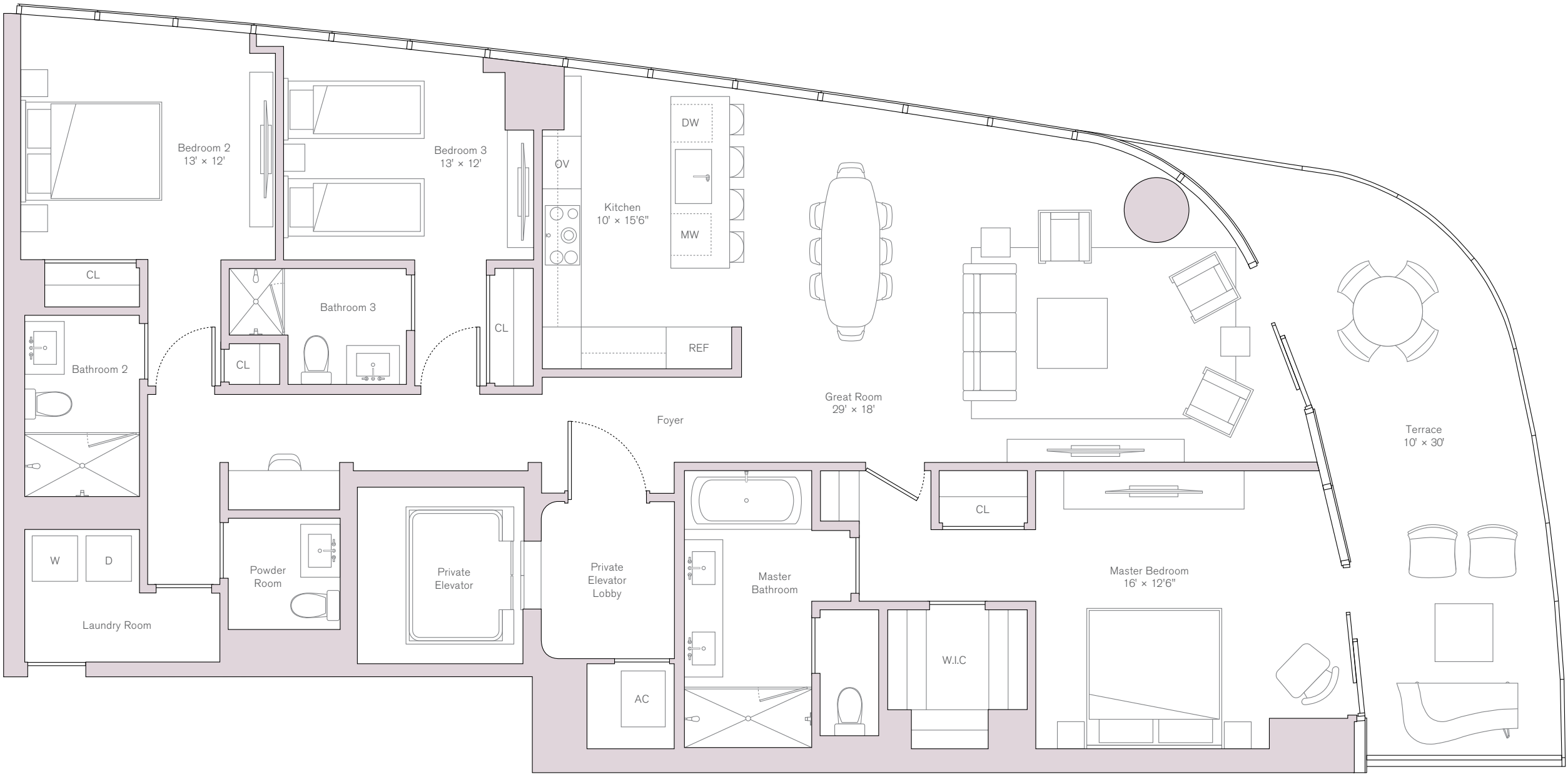
North East Residence  
Levels 05-16 Unit 01

INTERIOR  
2,096 SQ FT / 195 SQ M

EXTERIOR  
319 SQ FT / 30 SQ M

TOTAL  
2,415 SQ FT / 225 SQ M

FEATURES  
3 Bedrooms  
3.5 Bathrooms



# Una

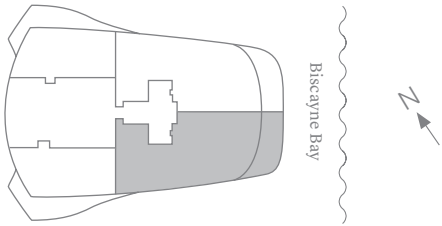
South East Residence  
Levels 05-16 Unit 02

INTERIOR  
2,105 SQ FT / 196 SQ M

EXTERIOR  
319 SQ FT / 30 SQ M

TOTAL  
2,424 SQ FT / 226 SQ M

FEATURES  
3 Bedrooms  
3.5 Bathrooms



# Una

South West Residence  
Levels 05–16 Unit 03

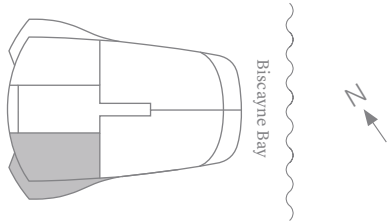
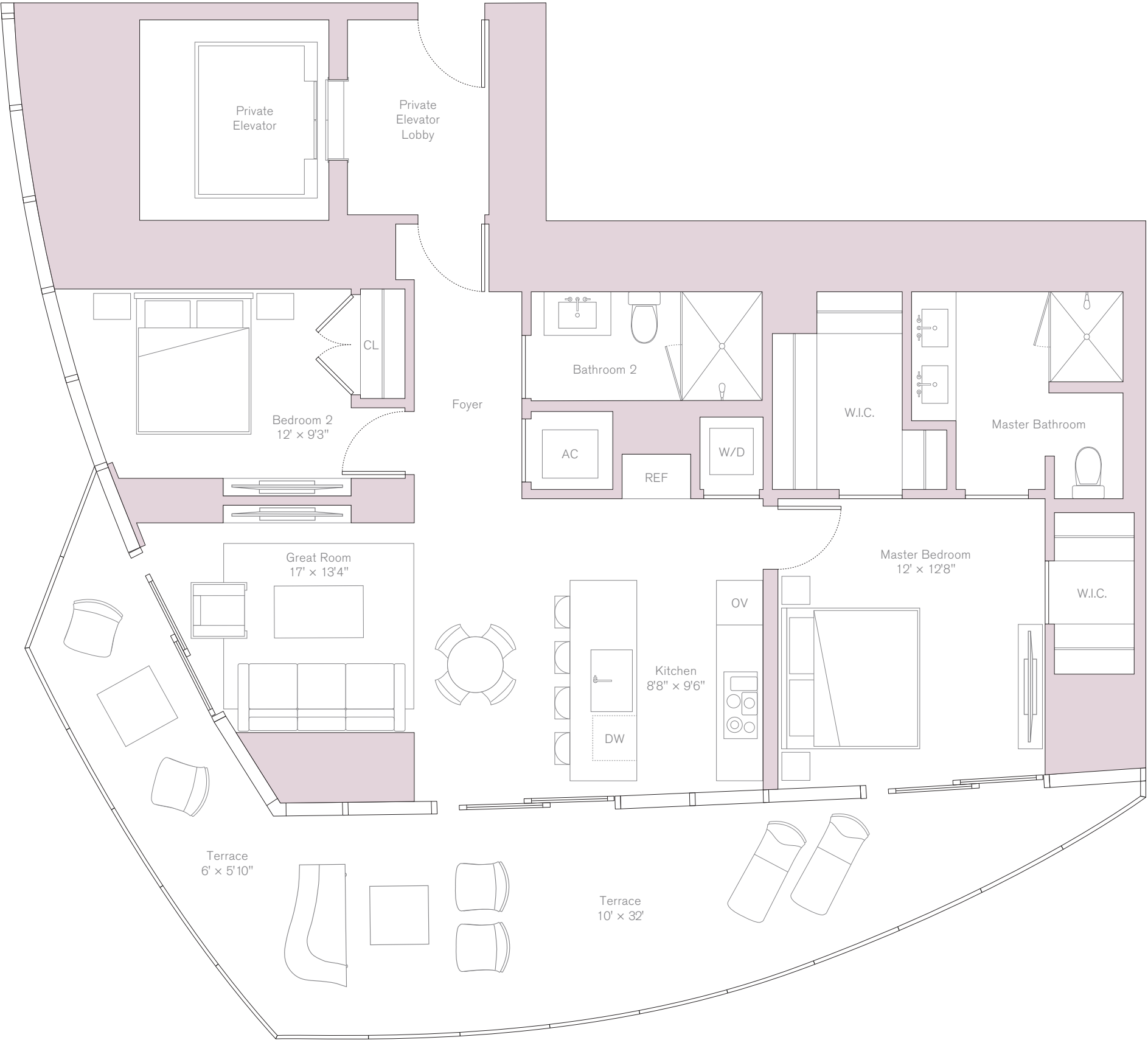
INTERIOR  
1,102 SQ FT / 102 SQ M\*

EXTERIOR  
421 SQ FT / 39 SQ M\*

TOTAL  
1,523 SQ FT / 141 SQ M\*

FEATURES  
2 Bedrooms  
2 Bathrooms

\*On Level 16 the residence  
has the following dimensions:  
Interior: 1,130 SQ FT / 105 SQ M  
Exterior: 439.5 SQ FT / 41 SQ M  
Total: 1,570 SQ FT / 146 SQ M



# Una

## North West Residence Levels 05-16 Unit 04

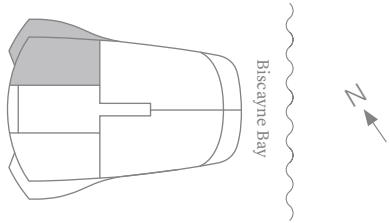
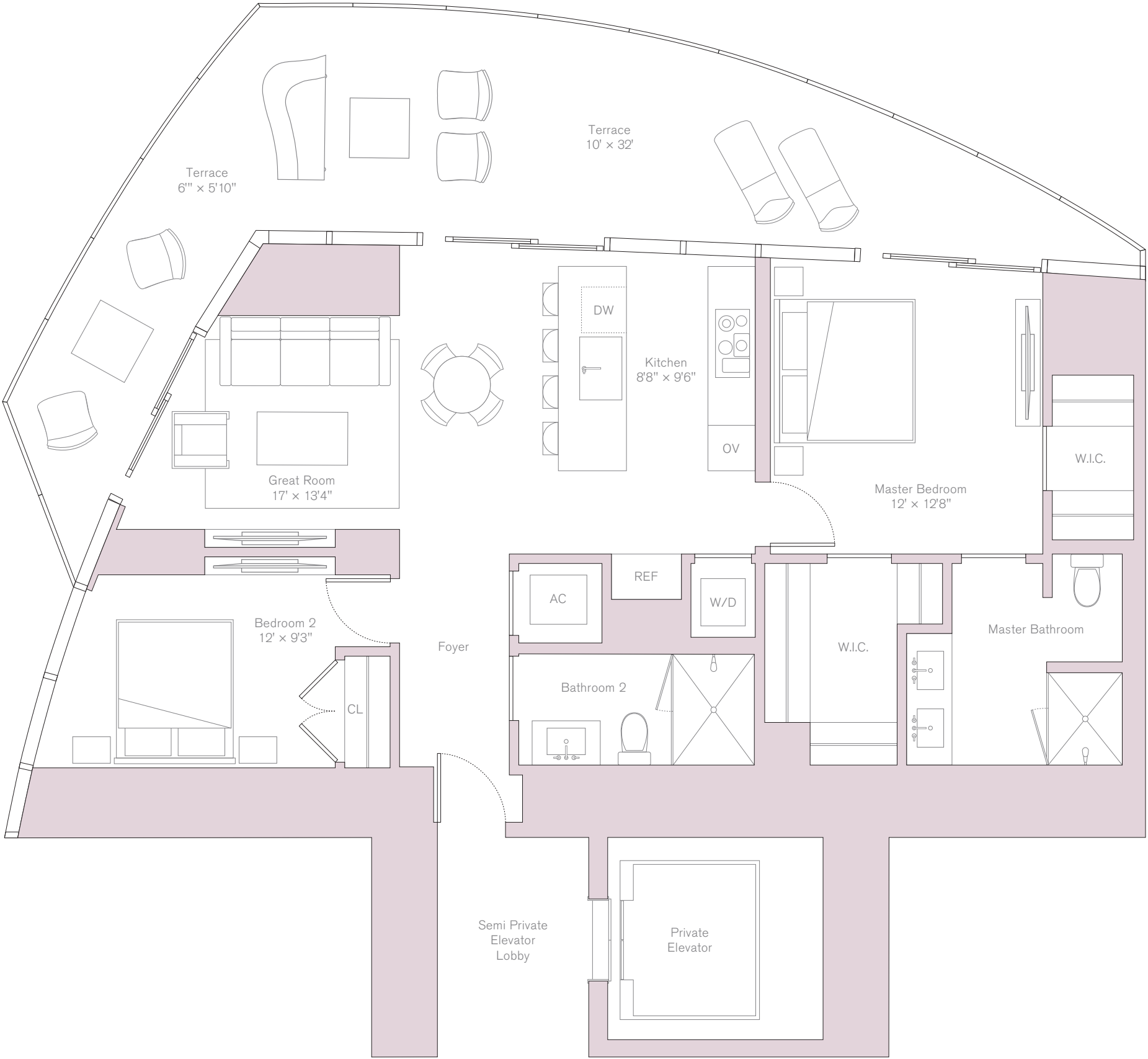
INTERIOR  
1,102 SQ FT / 102 SQ M\*

EXTERIOR  
421 SQ FT / 39 SQ M\*

TOTAL  
1,523 SQ FT / 141 SQ M\*

FEATURES  
2 Bedrooms  
2 Bathrooms

\*On Level 16 the residence  
has the following dimensions:  
Interior: 1,130 SQ FT / 105 SQ M  
Exterior: 439.5 SQ FT / 41 SQ M  
Total: 1,570 SQ FT / 146 SQ M



# Una

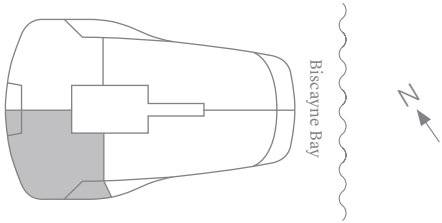
South West Residence  
Levels 19-37 Unit 03

INTERIOR  
1,946 SQ FT / 181 SQ M

EXTERIOR  
313 SQ FT / 29 SQ M

TOTAL  
2,259 SQ FT / 210 SQ M

FEATURES  
3 Bedrooms  
3.5 Bathrooms



# Una

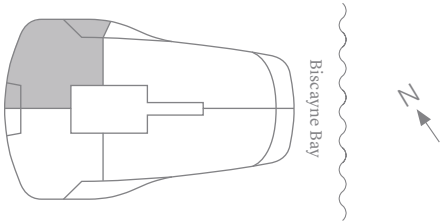
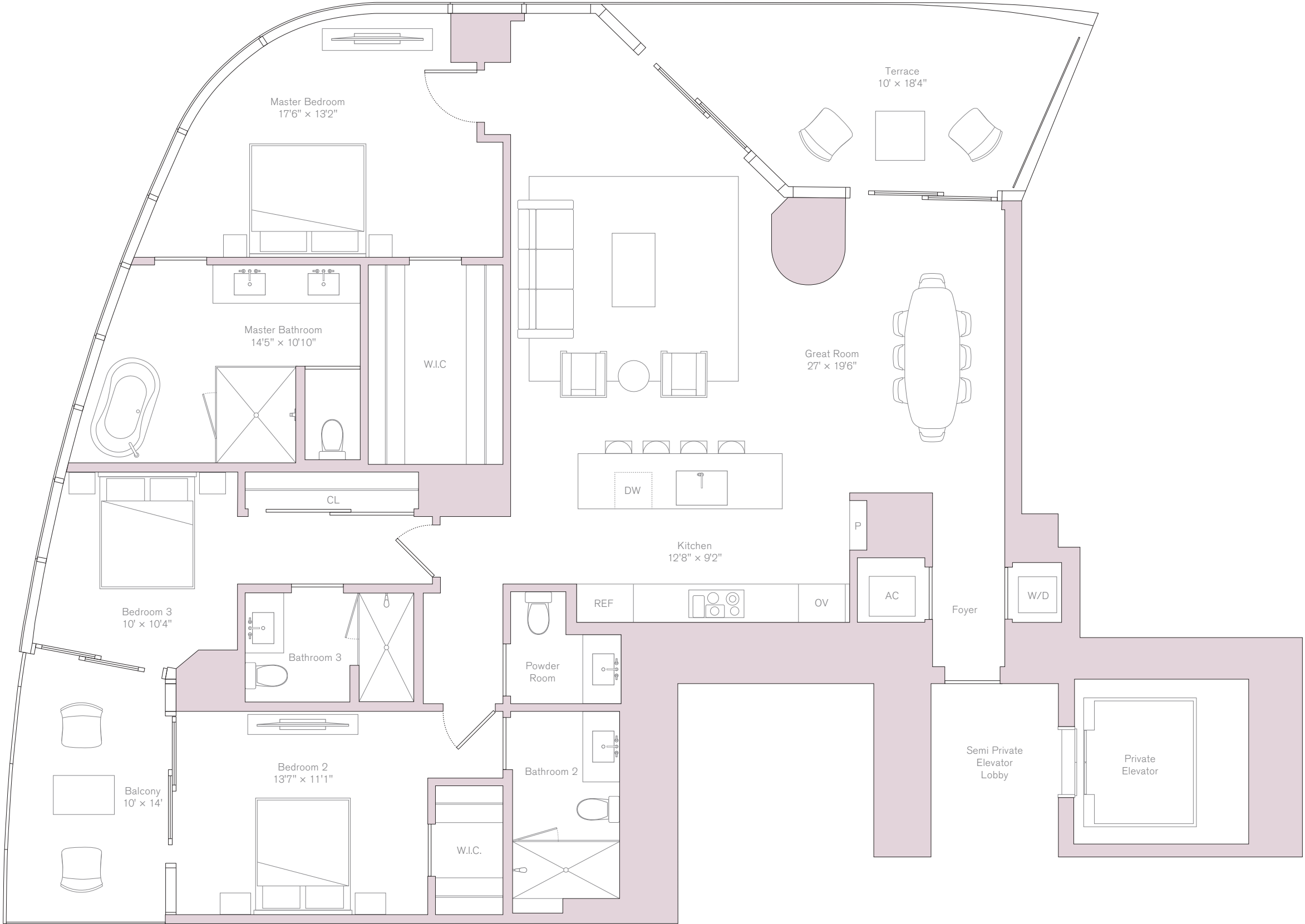
## North West Residence Levels 19-37 Unit 04

INTERIOR  
1,946 SQ FT / 181 SQ M

EXTERIOR  
313 SQ FT / 29 SQ M

TOTAL  
2,259 SQ FT / 210 SQ M

FEATURES  
3 Bedrooms  
3.5 Bathrooms



# Una

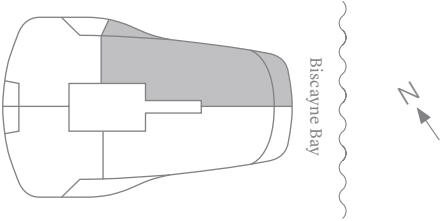
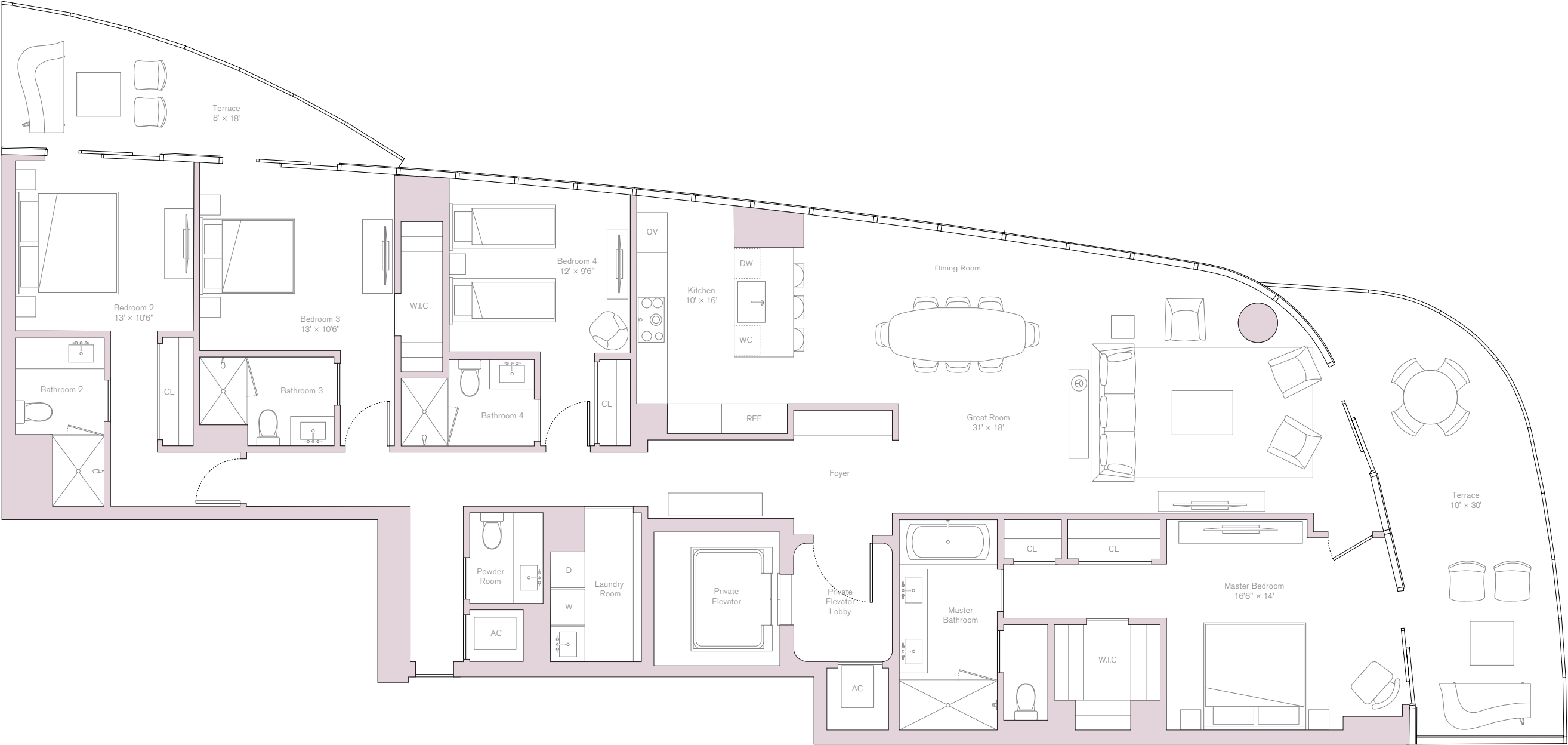
## North East Residence Levels 23-37 Unit 01

INTERIOR  
2,743 SQ FT / 255 SQ M

EXTERIOR  
483 SQ FT / 45 SQ M

TOTAL  
3,226 SQ FT / 300 SQ M

FEATURES  
4 Bedrooms  
4.5 Bathrooms  
Laundry Room



# Una

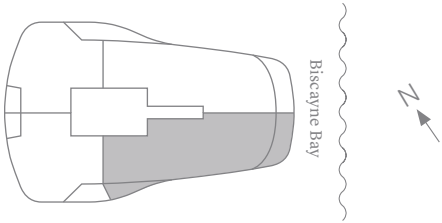
South East Residence  
Levels 23-37 Unit 02

INTERIOR  
2,752 SQ FT / 256 SQ M

EXTERIOR  
483 SQ FT / 45 SQ M

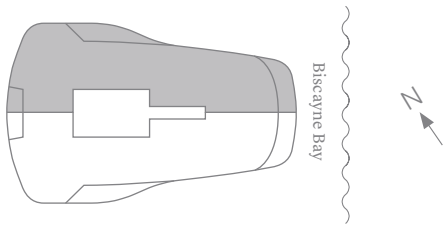
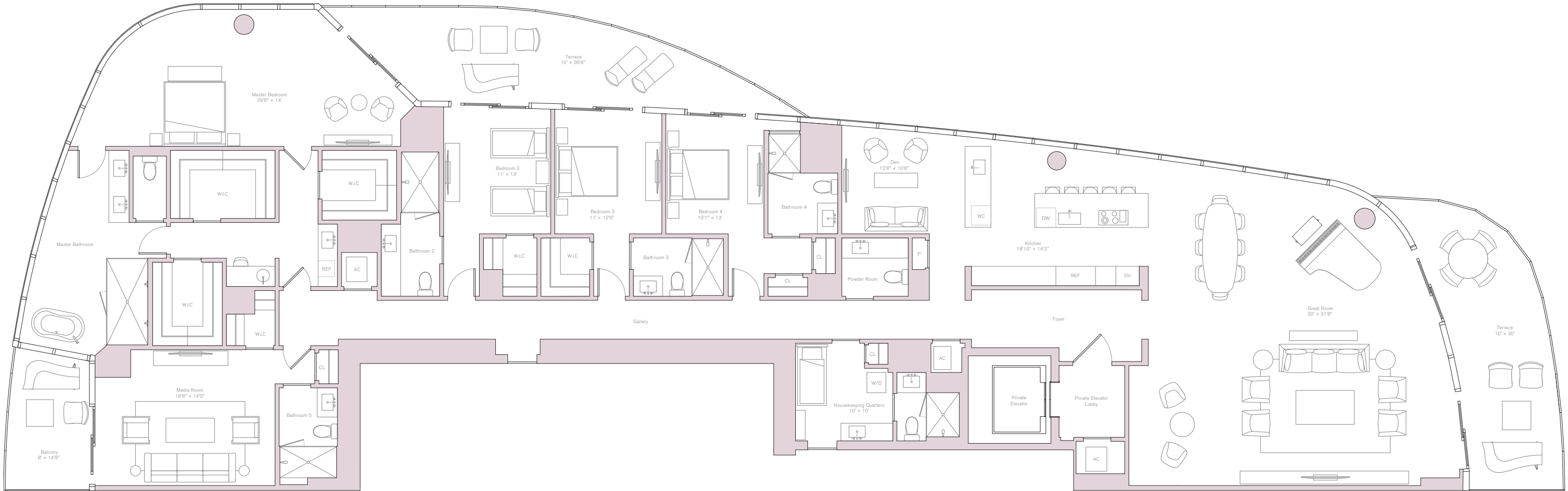
TOTAL  
3,235 SQ FT / 301 SQ M

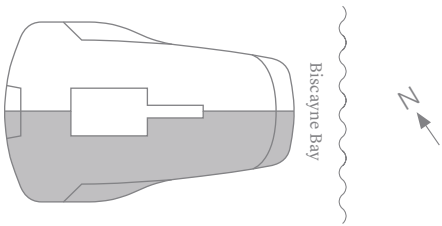
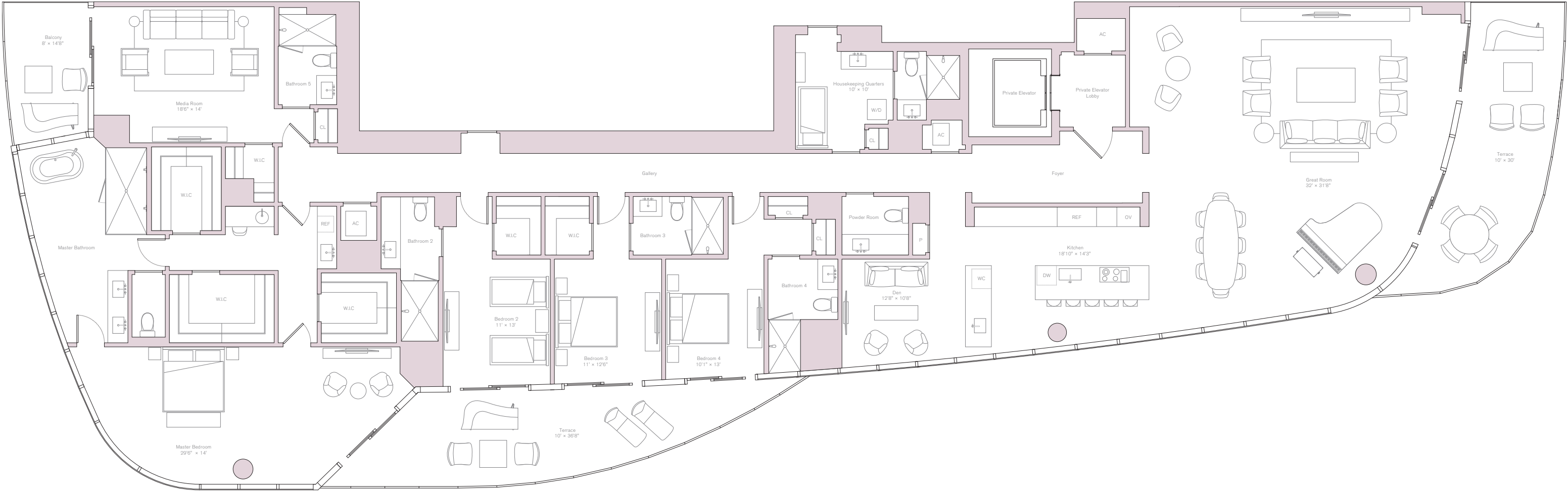
FEATURES  
4 Bedrooms  
4.5 Bathrooms  
Laundry Room





- FEATURES
- 5 Bedrooms
  - 6.5 Bathrooms
  - Den
  - Housekeeping Quarters





# Una

## Upper North Penthouse Level 44: 1st Level

INTERIOR  
4,672 SQ FT / 434 SQ M

EXTERIOR  
796 SQ FT / 74 SQ M

TOTAL  
5,468 SQ FT / 508 SQ M

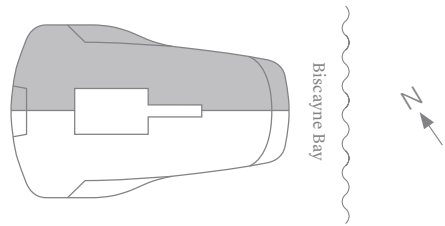
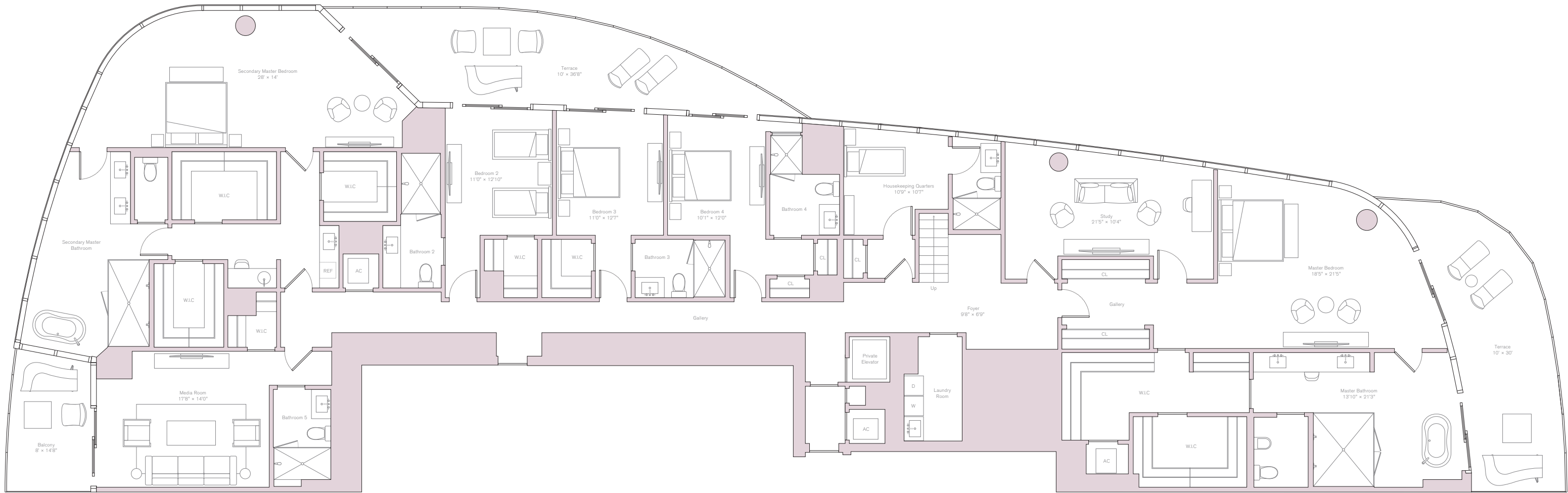
- FEATURES
- 6 Bedrooms
  - 7 Bathrooms
  - Media Room
  - Study
  - Private Internal Elevator
  - Laundry Room

FULL UNIT

INTERIOR  
7,084 SQ FT / 658 SQ M

EXTERIOR  
2,871 SQ FT / 267 SQ M

TOTAL  
9,955 SQ FT / 925 SQ M



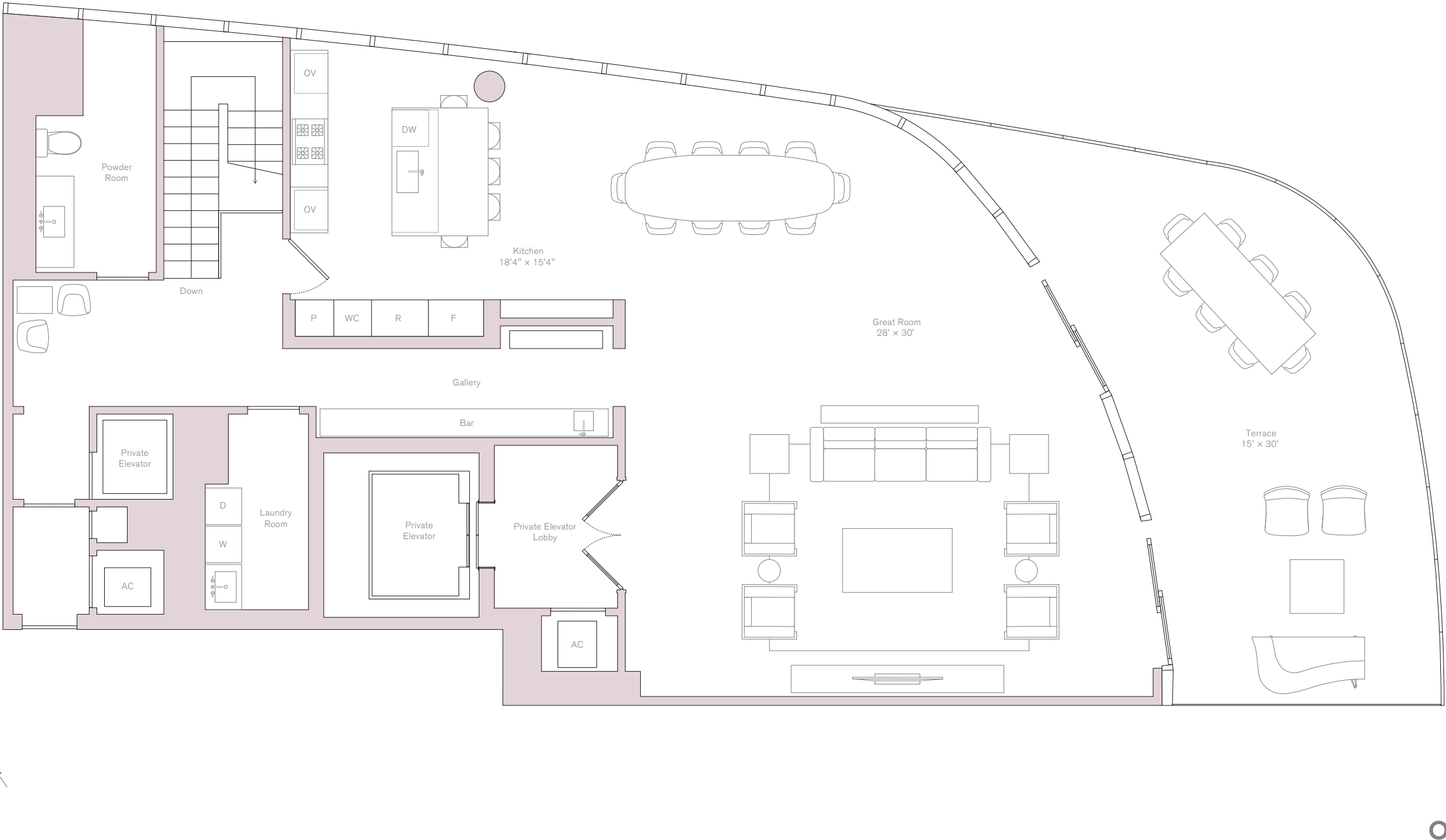
Upper North Penthouse  
2nd Level

INTERIOR  
1,896 SQ FT / 176 SQ M

EXTERIOR  
515 SQ FT / 48 SQ M

TOTAL  
2,411 SQ FT / 224 SQ M

- FEATURES
- Great Room
  - Kitchen
  - Powder Room
  - Laundry Room
  - Private Elevator



ORAL REPRESENTATIONS CANNOT BE RELIED UPON AS CORRECTLY STATING THE REPRESENTATIONS OF THE DEVELOPER. FOR CORRECT REPRESENTATIONS, MAKE REFERENCE TO THIS BROCHURE AND TO THE DOCUMENTS REQUIRED BY SECTION 718.503, FLORIDA STATUTES, TO BE FURNISHED BY A DEVELOPER TO A BUYER OR LESSEE.. Ceiling heights are measured from top of slab to top of slab. As a result, actual clearance between the top of the finished floor coverings and the underside of the finished ceiling, drop ceiling or soffits will be less. All ceiling heights are approximate and subject to change. All depictions of furniture, appliances, counters, soffits, floor coverings and other matters of detail, including, without limitation, items of finish and decoration, are conceptual only and are not necessarily included in each Unit. Furnishings are only included if and to the extent provided in your purchase agreement. Stated square footages and dimensions are measured to the exterior boundaries of the exterior walls and the centerline of interior demising walls and in fact vary from the square footage and dimensions that would be determined by using the description and definition of the "Unit" set forth in the Declaration (which generally only includes the interior airspace between the perimeter walls and excludes all interior structural components and other common elements). This method is generally used in sales materials and is provided to allow a prospective buyer to compare the Units with units in other condominium projects that utilize the same method. Measurements of rooms set forth on this floor plan are generally taken at the farthest points of each given room (as if the room were a perfect rectangle), without regard for any cutouts or variations. Accordingly, the area of the actual room will typically be smaller than the product obtained by multiplying the stated length and width. All dimensions are estimates which will vary with actual construction, and all floor plans, specifications and other development plans are subject to change and will not necessarily accurately reflect the final plans and specifications for the development. All depictions of appliances, counters, soffits, floor coverings and other matters of detail, including, without limitation, items of finish and decoration, are conceptual only and are not necessarily included in each Unit.

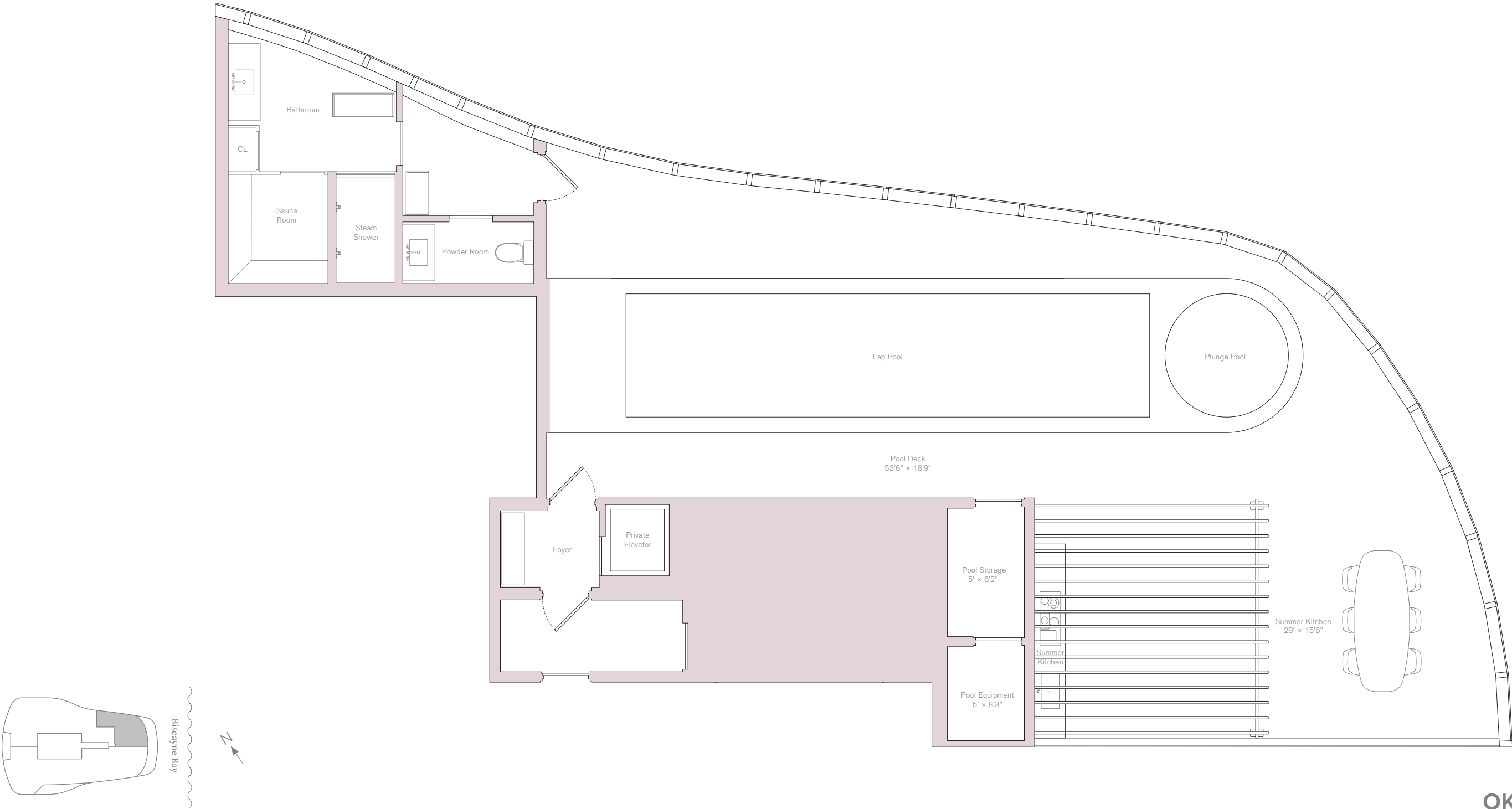
Upper North Penthouse  
Roof Top

INTERIOR  
516 SQ FT / 48 SQ M

EXTERIOR  
1,560 SQ FT / 145 SQ M

TOTAL  
2,076 SQ FT / 193 SQ M

- FEATURES
- Sauna Room
  - Steam Room
  - Bathroom
  - Large Open Air Deck
  - Lap Pool
  - Plunge Pool
  - Summer Kitchen with Trellis
  - Pool Storage



Upper South Penthouse  
Level 44: 1st Level

INTERIOR  
4,681 SQ FT / 435 SQ M

EXTERIOR  
796 SQ FT / 74 SQ M

TOTAL  
5,477 SQ FT / 509 SQ M

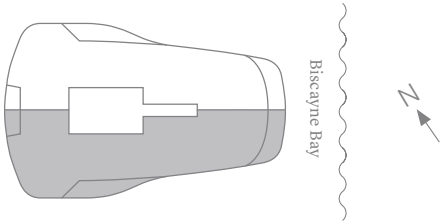
- FEATURES
- 6 Bedrooms
  - 7 Bathrooms
  - Media Room
  - Study
  - Private Internal Elevator
  - Laundry Room

FULL UNIT

INTERIOR  
7,089 SQ FT / 660 SQ M

EXTERIOR  
2,871 SQ FT / 267 SQ M

TOTAL  
9,960 SQ FT / 927 SQ M



ORAL REPRESENTATIONS CANNOT BE RELIED UPON AS CORRECTLY STATING THE REPRESENTATIONS OF THE DEVELOPER. FOR CORRECT REPRESENTATIONS, MAKE REFERENCE TO THIS BROCHURE AND TO THE DOCUMENTS REQUIRED BY SECTION 718.503, FLORIDA STATUTES, TO BE FURNISHED BY A DEVELOPER TO A BUYER OR LESSEE.. Ceiling heights are measured from top of slab to top of slab. As a result, actual clearance between the top of the finished floor coverings and the underside of the finished ceiling, drop ceiling or soffits will be less. All ceiling heights are approximate and subject to change. All depictions of furniture, appliances, counters, soffits, floor coverings and other matters of detail, including, without limitation, items of finish and decoration, are conceptual only and are not necessarily included in each Unit. Furnishings are only included if and to the extent provided in your purchase agreement. Stated square footages and dimensions are measured to the exterior boundaries of the exterior walls and the centerline of interior demising walls and in fact vary from the square footage and dimensions that would be determined by using the description and definition of the "Unit" set forth in the Declaration (which generally only includes the interior airspace between the perimeter walls and excludes all interior structural components and other common elements). This method is generally used in sales materials and is provided to allow a prospective buyer to compare the Units with units in other condominium projects that utilize the same method. Measurements of rooms set forth on this floor plan are generally taken at the farthest points of each given room (as if the room were a perfect rectangle), without regard for any cutouts or variations. Accordingly, the area of the actual room will typically be smaller than the product obtained by multiplying the stated length and width. All dimensions are estimates which will vary with actual construction, and all floor plans, specifications and other development plans are subject to change and will not necessarily accurately reflect the final plans and specifications for the development. All depictions of appliances, counters, soffits, floor coverings and other matters of detail, including, without limitation, items of finish and decoration, are conceptual only and are not necessarily included in each Unit.

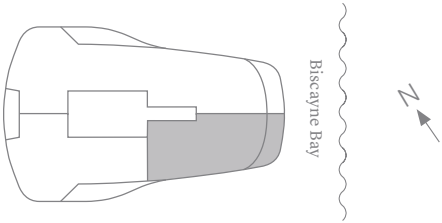
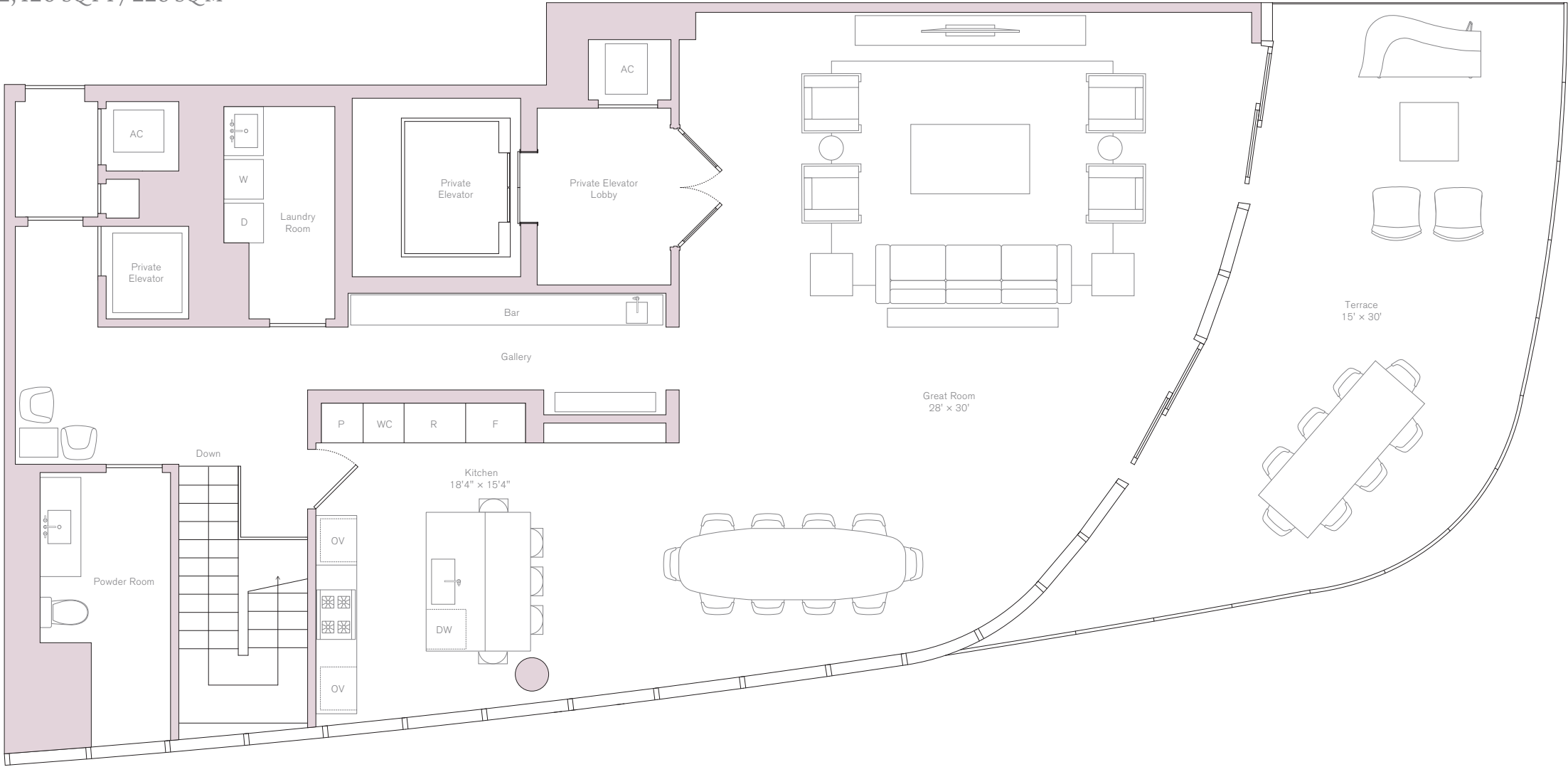
Upper South Penthouse  
2nd Level

INTERIOR  
1,905 SQ FT / 178 SQ M

EXTERIOR  
515 SQ FT / 48 SQ M

TOTAL  
2,420 SQ FT / 226 SQ M

- FEATURES
- Great Room
  - Kitchen
  - Powder Room
  - Laundry Room
  - Private Elevator



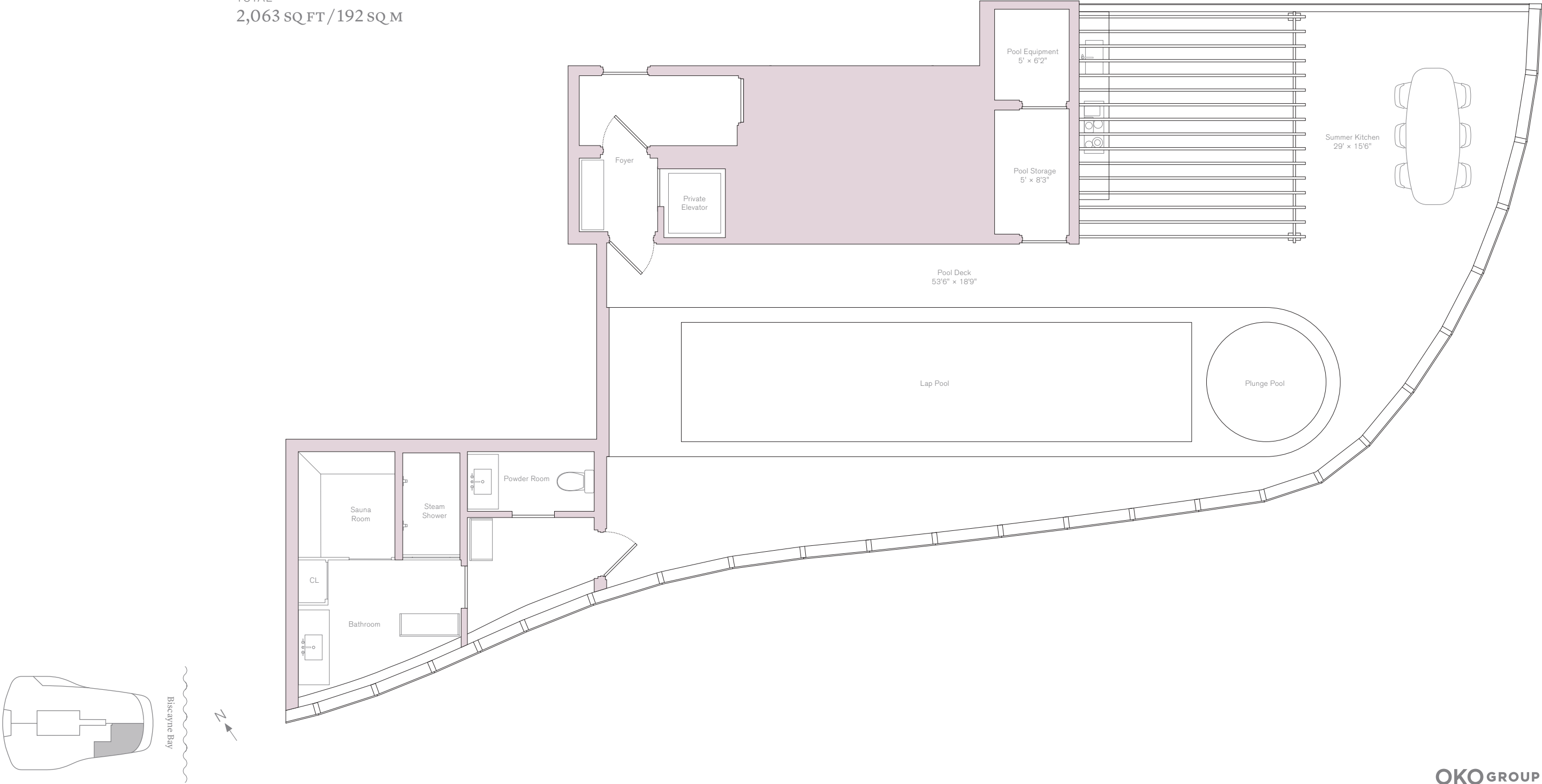
Upper South Penthouse  
Roof Top

INTERIOR  
503 SQ FT / 47 SQ M

EXTERIOR  
1,560 SQ FT / 145 SQ M

TOTAL  
2,063 SQ FT / 192 SQ M

- FEATURES
- Sauna Room
  - Steam Room
  - Bathroom
  - Large Open Air Deck
  - Lap Pool
  - Plunge Pool
  - Summer Kitchen with Trellis
  - Pool Storage





# Una

## Vista Residence Levels 19–22 Unit 01

INTERIOR  
5,489 SQ FT / 510 SQ M

EXTERIOR  
966 SQ FT / 90 SQ M

TOTAL  
6,455 SQ FT / 600 SQ M

FEATURES  
5 Bedrooms  
6.5 Bathrooms  
Family Room

